

Sigmar Polke: Eine Winterreise
537 West 20th Street
May 7 - June 25, 2016

First Floor; Front Gallery



Sigmar Polke

Palme auf Autostoff (Palm Tree on Fabric), 1969
Dispersion on fabric
59 x 49 1/4 inches
149.9 x 125.1 cm
61 x 51 1/4 x 2 inches (framed)
154.9 x 130.2 x 5.1 cm
POLSI0306



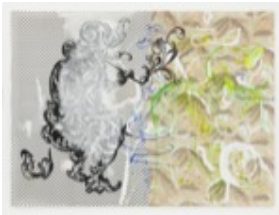
Sigmar Polke

Mondlandschaft mit Schilf (Moonlit Landscape with Reeds),
1969
Dispersion on two (2) different types of fabric
59 x 49 inches
149.9 x 124.5 cm
63 1/4 x 53 1/2 x 4 3/8 inches (framed)
160.7 x 135.9 x 11.1 cm
POLSI0155



Sigmar Polke

Ohne Titel (Elch)
(Untitled [Elk]), 1981
Lacquer and spray paint on plastic in perspex box
61 x 53 1/4 inches
154.9 x 135.3 cm
62 x 53 3/4 x 3 1/8 inches (box)
157.5 x 136.5 x 7.9 cm
POLSI0343



Sigmar Polke
Ohne Titel (Untitled), 1989
Acrylic and resin on fabric
88 x 119 1/4 inches
223.5 x 302.9 cm
Private Collection
POLSI0382



Sigmar Polke
Landschaft (Landscape), 1982
Acrylic and metallic paint on canvas
70 7/8 x 59 1/8 inches
180 x 150.2 cm
Private Collection
POLSI0281

First Floor; West Gallery



Sigmar Polke
Irgendwo ganz oben
(Somewhere at the Top), 1983
Artificial resin and dispersion on canvas
102 1/2 x 79 inches
260.4 x 200.7 cm
Private Collection
POLSI0341



Sigmar Polke
Magnetische Landschaft
(Magnetic Landscape), 1982
Acrylic and iron mica on fabric
116 5/8 x 114 1/2 inches
296.2 x 290.8 cm
117 1/2 x 115 3/4 x 3 1/8 inches (framed)
298.4 x 294 x 7.9 cm
Private Collection
POLSI0268



Sigmar Polke
Hallucinogen, 1983
Pigment and resin on canvas
126 x 102 3/8 inches
320 x 260 cm
126 3/4 x 103 3/4 x 3 1/4 inches (framed)
321.9 x 263.5 x 8.3 cm
Private Collection
POLSI0319



Sigmar Polke
Schwarzer Fleck (Eifel)
(*Black Stain [Eifel]*), 1984
Acrylic, resin, and pigment on canvas
70 7/8 x 53 1/8 inches
180 x 134.9 cm
72 3/4 x 55 x 1 7/8 inches (framed)
184.8 x 139.7 x 4.8 cm
The Rachofsky Collection
POLSI0295

First Floor; North Gallery



Sigmar Polke
Arcimi Boldi, 1984
Acrylic, artificial resin, lacquer, and dispersion on canvas
59 1/8 x 71 inches
150.2 x 180.3 cm
60 3/4 x 72 1/2 x 1 3/4 inches (framed)
154.3 x 184.2 x 4.4 cm
Initialed and dated verso
POLSI0301



Sigmar Polke
Lungta, 1985
Acrylic on fabric
59 x 71 inches
149.9 x 180.3 cm
60 x 71 3/4 x 1 1/2 inches (framed)
152.4 x 182.2 x 3.8 cm
Signed and dated lower right recto
Private Collection, New York
POLSI0296



Sigmar Polke

Nachtkappe I

(Night Cap I), 1986

Indigo and alcohol varnish on canvas

120 3/8 x 88 7/8 inches

305.8 x 225.7 cm

121 1/4 x 89 1/2 x 2 3/4 inches (framed)

308 x 227.3 x 7 cm

POLSI0340



Sigmar Polke

Lappländische Reise I

(Lapland Journey I), 1984

Acrylic, resin, and pigment on canvas

78 7/8 x 102 1/2 inches

200.3 x 260.4 cm

79 1/4 x 102 7/8 x 1 inches (framed)

201.3 x 261.3 x 2.5 cm

Private Collection

POLSI0269



Sigmar Polke

Lappländische Reise II (Lapland Journey II), 1984

Acrylic, oil, resin, and pigment on canvas

78 7/8 x 102 3/8 inches

200.3 x 260 cm

79 1/8 x 102 3/4 x 7/8 inches (framed)

201 x 261 x 2.2 cm

Collection of Beth Swofford

POLSI0147A



Sigmar Polke

Lappländische Reise III

(Lapland Journey III), 1984

Acrylic on fabric

102 5/8 x 78 7/8 inches

260.7 x 200.3 cm

102 7/8 x 79 1/4 x 1 inches (framed)

261.3 x 201.3 x 2.5 cm

Private Collection

POLSI0270



Sigmar Polke
Lappländische Reise IV
(*Lapland Journey IV*), 1984
Oil and pigment on canvas
102 1/2 x 79 inches
260.4 x 200.7 cm
102 7/8 x 79 1/2 x 1 inches (framed)
261.3 x 201.9 x 2.5 cm
Private Collection
POLSI0271



Sigmar Polke
Hannibal mit seinen Panzerelefanten (*Hannibal with his Armored Elephants*), 1982
Resin and pigment on canvas
102 1/2 x 78 5/8 inches
260.4 x 199.7 cm
103 3/4 x 80 x 1 5/8 inches (framed)
263.5 x 203.2 x 4.1 cm
Froehlich Collection, Stuttgart
POLSI0290

Second Floor; Main Gallery



Sigmar Polke
Laterna Magica (*Erde und Mond*)
(*The Magic Lantern [Earth and Moon]*), ca. 1993
Resin on fabric, painted on both sides
51 1/4 x 59 1/8 inches
130.2 x 150.2 cm
52 3/8 x 60 1/4 x 2 7/8 inches (framed)
133 x 153 x 7.3 cm
Private Collection
POLSI0349



Sigmar Polke

Laterna Magica (Erde und Mond)

(The Magic Lantern [Earth and Moon]), ca. 1993

Resin on fabric, painted on both sides

51 3/16 x 59 1/8 inches

130 x 150.2 cm

52 5/16 x 60 1/4 x 2 7/8 inches (framed)

132.9 x 153 x 7.3 cm

Private Collection

POLSI0346



Sigmar Polke

Laterna Magica (Erde und Mond)

(The Magic Lantern [Earth and Moon]), ca. 1993

Resin on fabric, painted on both sides

51 3/16 x 59 1/8 inches

130 x 150.2 cm

52 5/16 x 60 1/4 x 2 7/8 inches (framed)

132.9 x 153 x 7.3 cm

Private Collection

POLSI0347



Sigmar Polke

Laterna Magica (Erde und Mond)

(The Magic Lantern [Earth and Moon]), ca. 1993

Resin on fabric, painted on both sides

51 3/16 x 59 1/8 inches

130 x 150.2 cm

52 5/16 x 60 1/4 x 2 7/8 inches (framed)

132.9 x 153 x 7.3 cm

Private Collection

POLSI0345



Sigmar Polke

Laterna Magica (Erde und Mond)

(The Magic Lantern [Earth and Moon]), ca. 1993

Resin on fabric, painted on both sides

51 1/16 x 59 1/8 inches

129.7 x 150.2 cm

52 5/16 x 60 3/8 x 2 7/8 inches (framed)

132.9 x 153.4 x 7.3 cm

Private Collection

POLSI0348



Sigmar Polke

Laterna Magica (Erde und Mond)

(The Magic Lantern [Earth and Moon]), ca. 1993

Resin on fabric, painted on both sides

51 1/8 x 59 1/8 inches

129.9 x 150.2 cm

52 3/8 x 60 3/8 x 2 7/8 inches (framed)

133 x 153.4 x 7.3 cm

Private Collection

POLSI0344

Second Floor; Hallway



Sigmar Polke

Laterna Magica

(The Magic Lantern), 1988-1996

Resin on fabric, painted on both sides

51 3/16 x 59 1/8 inches

130 x 150.2 cm

52 5/16 x 60 1/4 x 2 7/8 inches (framed)

132.9 x 153 x 7.3 cm

Private Collection

POLSI0373

Second Floor; North Gallery



Sigmar Polke

Laterna Magica

(The Magic Lantern), 1993

Resin on fabric, painted on both sides

51 3/16 x 59 1/16 inches

130 x 150 cm

52 5/16 x 60 3/16 x 2 7/8 inches (framed)

132.9 x 152.9 x 7.3 cm

Private Collection

POLSI0356



Sigmar Polke
Laterna Magica
(The Magic Lantern), 1993
Resin on fabric, painted on both sides
51 1/4 x 59 1/8 inches
130.2 x 150.2 cm
52 1/2 x 60 3/8 x 2 7/8 inches (framed)
133.3 x 153.4 x 7.3 cm
Private Collection
POLSI0354



Sigmar Polke
Laterna Magica
(The Magic Lantern), 1988-1996
Resin on fabric, painted on both sides
51 3/16 x 59 1/16 inches
130 x 150 cm
52 5/16 x 60 3/16 x 2 7/8 inches (framed)
132.9 x 152.9 x 7.3 cm
Private Collection
POLSI0351



Sigmar Polke
Ohne Titel (Untitled), 1988
Resin and lacquer on fabric
51 1/8 x 59 1/8 inches
129.9 x 150.2 cm
52 1/4 x 60 1/4 x 2 7/8 inches (framed)
132.7 x 153 x 7.3 cm
Private Collection
POLSI0371



Sigmar Polke
Druckfehler / Landschaft (Printing Error / Landscape),
1988
Resin and acrylic on fabric
51 1/8 x 59 inches
129.9 x 149.9 cm
52 1/4 x 60 1/8 x 2 7/8 inches (framed)
132.7 x 152.7 x 7.3 cm
Private Collection
POLSI0372



Sigmar Polke

Laterna Magica

(The Magic Lantern), 1988-1996

Resin on fabric, painted on both sides

51 1/4 x 59 3/16 inches

130.2 x 150.3 cm

52 1/2 x 60 7/16 x 2 7/8 inches (framed)

133.3 x 153.5 x 7.3 cm

Private Collection

POLSI0352

Second Floor; South Gallery



Sigmar Polke

Uluru, Olgas, 1980-1981

16mm film (digital copy), color, no sound

Duration: 22:43 minutes

POLSI0378