

**Josef and Anni and Ruth and Ray**  
**34 East 69th Street**  
**September 20 - October 28, 2017**

North Gallery:



**Ruth Asawa**

*Untitled (BMC.85, Dogwood Leaves)*, c. 1946-1949

Oil and watercolor on paper

10 1/2 x 8 inches

26.7 x 20.3 cm

Framed: 19 7/8 x 14 7/8 x 1 1/4 inches

50.5 x 37.8 x 3.2 cm

ASARU0147



**Josef Albers**

*Leaf Study I*, c. 1940

Leaves and colored paper

9 1/2 x 18 inches

24.1 x 45.7 cm

Framed: 14 5/8 x 23 x 1 1/4 inches

37.1 x 58.4 x 3.2 cm

The Josef and Anni Albers Foundation

ALBJO0284



**Ruth Asawa**

*Untitled (S.264, Hanging Two-Lobed, Continuous Form)*,  
1949

Hanging sculpture—oxidized copper wire

16 x 4 x 4 inches

40.6 x 10.2 x 10.2 cm

The Asawa Family Collection

ASARU0031



**Ruth Asawa**

*Untitled (SF.047a, Potato print [blue and black cross]),*  
1951-1952

Ink on Sumi-e paper

14 1/4 x 10 inches

36.2 x 25.4 cm

Framed: 19 1/8 x 15 1/8 x 1 3/8 inches

48.6 x 38.4 x 3.5 cm

The Asawa Family Collection

ASARU0132



**Ruth Asawa**

*Untitled (SF.045B, Potato print branches*  
*[brown/orange]),* 1951-1952

Ink on paper

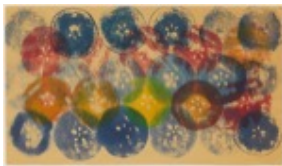
14 1/4 x 10 1/4 inches

36.2 x 26 cm

Framed: 19 1/8 x 15 1/8 x 1 3/8 inches

48.6 x 38.4 x 3.5 cm

ASARU0134



**Ruth Asawa**

*Untitled (SF.049a, Apple Print - red/blue/yellow/orange),*  
1951-1952

Ink on newsprint

8 1/2 x 15 inches

21.6 x 38.1 cm

Framed: 13 1/2 x 20 x 1 1/2 inches

34.3 x 50.8 x 3.8 cm

ASARU0137



**Ruth Asawa**

*Untitled (SF.049e, Apple Print - red/blue/green/orange),*  
1951-1952

Ink on paper

12 x 18 inches

30.5 x 45.7 cm

Framed: 16 3/4 x 22 7/8 x 1 3/8 inches

42.5 x 58.1 x 3.5 cm

ASARU0133



**Ruth Asawa**

*Untitled (SF.045c, Potato print branches, purple/blue)*,  
1951-1952

Ink on paper

14 1/4 x 10 1/4 inches

36.2 x 26 cm

Framed: 19 1/4 x 15 1/8 x 1 3/8 inches

48.9 x 38.4 x 3.5 cm

ASARU0130



**Ray Johnson**

*Christmas Trees*, 1957

Collage on cardboard panel

17 3/4 x 21 3/4 inches

45.1 x 55.2 cm

Framed: 18 5/8 x 22 5/8 x 1 1/2 inches

47.3 x 57.5 x 3.8 cm

Signed and dated lower right recto

JOHRA0020



**Ray Johnson**

*Untitled (Magenta Cut Paper Moticos)*, c. 1958-1960

Collage on illustration board

10 7/8 x 7 1/8 inches

27.6 x 18.1 cm

Framed: 15 5/8 x 12 x 1 inches

39.7 x 30.5 x 2.5 cm

Ray Johnson Estate

JOHRA0014



**Anni Albers**

*Black-White-Gold I*, 1950

Cotton, lurex, and jute

25 x 19 1/4 inches

63.5 x 48.9 cm

Framed: 32 3/4 x 24 1/2 x 1 1/2 inches

83.2 x 62.2 x 3.8 cm

Initialed lower left recto

The Josef and Anni Albers Foundation

ALBAN0033



**Josef Albers**

*Leaf Study III*, c. 1940

Leaves and colored paper

18 x 18 5/8 inches

45.7 x 47.3 cm

Framed: 23 x 23 1/2 x 1 1/4 inches

58.4 x 59.7 x 3.2 cm

ALBJO0283

Hallway:



**Ruth Asawa**

*Untitled (BMC.129, In and Out)*, c. 1946-1949

Oil on paper on board

7 x 19 inches

17.8 x 48.3 cm

Framed: 12 x 24 x 1 3/8 inches

30.5 x 61 x 3.5 cm

ASARU0161



**Ruth Asawa**

*Untitled (BMC.90, Arrows)*, c. 1946-1949

Oil on paper

19 x 12 inches

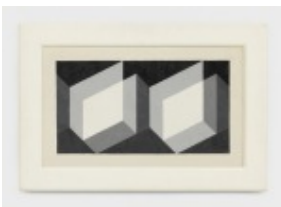
48.3 x 30.5 cm

Framed: 28 7/8 x 22 7/8 x 1 1/4 inches

73.3 x 58.1 x 3.2 cm

ASARU0175

South Gallery:



**Josef Albers**

*Modified Repetition*, 1943

Oil on Masonite

15 1/2 x 25 1/2 inches

39.4 x 64.8 cm

Framed: 20 7/8 x 31 x 1 7/8 inches

53 x 78.7 x 4.8 cm

Initialed and dated lower right recto; signed, titled, dated,  
and inscribed verso

ALBJO0059



**Josef Albers**

*Color study (Variant/Adobe)*, 1948  
Oil and graphite on blotting paper  
19 x 24 inches  
48.3 x 61 cm  
Framed: 23 1/4 x 28 1/8 x 1 1/2 inches  
59.1 x 71.4 x 3.8 cm  
Inscribed and dated lower right recto  
ALBJO0078



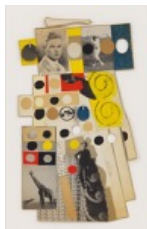
**Anni Albers**

*Design for a 1926 Unexecuted Wallhanging*, n.d.  
Gouache and pencil on reprographic paper  
15 1/8 x 9 7/8 inches  
38.4 x 25.1 cm  
Framed: 24 7/8 x 19 5/8 x 1 1/2 inches  
63.2 x 49.8 x 3.8 cm  
Signed and dated lower left recto  
ALBAN0053



**Anni Albers**

*Drawing for a Rug I*, 1959  
Ink and pencil on paper  
24 5/8 x 9 7/8 inches  
62.5 x 25.1 cm  
Framed: 27 3/8 x 15 1/4 x 1 1/4 inches  
69.5 x 38.7 x 3.2 cm  
Signed, titled, and dated lower recto  
ALBAN0054



**Ray Johnson**

*Untitled (Motico, William D. Bayles)*, 1955  
Collage  
12 1/2 x 7 1/8 inches  
31.8 x 18.1 cm  
Framed: 21 1/2 x 16 3/8 x 1 1/2 inches  
54.6 x 41.6 x 3.8 cm  
The Asawa Family Collection  
JOHRA0002



**Ray Johnson**

*Untitled (Motico, Cowboy Two)*, 1955

Collage

12 1/4 x 5 inches

31.1 x 12.7 cm

Framed: 21 1/8 x 13 3/4 x 1 1/2 inches

53.7 x 34.9 x 3.8 cm

The Asawa Family Collection

JOHRA0005



**Ray Johnson**

*Untitled (Motico, Odiferous Wood)*, 1955

Collage

12 x 8 3/8 inches

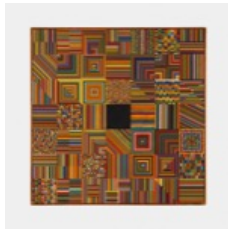
30.5 x 21.3 cm

Framed: 20 7/8 x 16 5/8 x 1 1/2 inches

53 x 42.2 x 3.8 cm

The Asawa Family Collection

JOHRA0003



**Ray Johnson**

*Calm Center*, c. 1949-1951

Oil on board in artist's frame

28 5/8 x 28 5/8 x 3/4 inches

72.7 x 72.7 x 1.9 cm

Ray Johnson Estate

JOHRA0021



**Ray Johnson**

*Untitled (Moticos with Red Ground)*, 1958

Collage on cardboard panel

11 1/8 x 7 1/2 inches

28.3 x 19.1 cm

Framed: 17 1/8 x 13 1/8 x 1 1/2 inches

43.5 x 33.3 x 3.8 cm

Signed lower right recto

JOHRA0013



**Ray Johnson**

*14 Squares*, c. 1956

Collage on cardboard panel

20 1/4 x 15 inches

51.4 x 38.1 cm

Framed: 20 3/4 x 15 5/8 x 1 1/2 inches

52.7 x 39.7 x 3.8 cm

Ray Johnson Estate

JOHRA0011



**Ruth Asawa**

*Untitled (S.461, Hanging Single Lobed, Five Layers of Spheres)*, c. 1954

Hanging sculpture—iron wire

15 x 21 x 21 inches

38.1 x 53.3 x 53.3 cm

ASARU0170



**Josef Albers**

*Study for Graphic Tectonic (Ascension)*, 1941

Ink and graphite on paper

22 1/8 x 17 1/8 inches

56.2 x 43.5 cm

Framed: 26 1/4 x 21 1/4 x 1 1/2 inches

66.7 x 54 x 3.8 cm

Signed, dated, and inscribed recto

ALBJO0237