

Luc Tuymans

Forever

The Management of Magic

February 14 - March 22, 2008

533 Gallery I



Luc Tuymans

Forever, 2008

Oil on canvas

68 3/4 x 70 inches

174.6 x 177.8 cm

TUYLU0301



Luc Tuymans

Turtle, 2007

Oil on canvas

144.88 x 200.39 inches

368 x 509 cm

TUYLU0296



Luc Tuymans

Singing flowers, 2008

Oil on canvas

41 1/2 x 57 3/4 inches

105.4 x 146.7 cm

TUYLU0300



Luc Tuymans

W, 2008

Oil on canvas

74 x 47 inches

188 x 119.4 cm

TUYLU0302

533 Gallery II



Luc Tuymans

Wonderland, 2007

Oil on canvas

138.98 x 215.35 inches

353 x 547 cm

TUYLU0295



Luc Tuymans

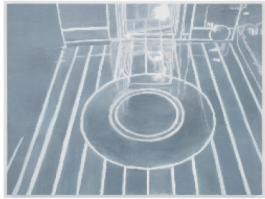
Epcot, 2007

Oil on canvas

60 3/4 x 87 3/4 inches

154.3 x 222.9 cm

TUYLU0297



Luc Tuymans

Simulation, 2007

Oil on canvas

87 x 116 inches

221 x 294.6 cm

TUYLU0299



Luc Tuymans

Magic, 2007

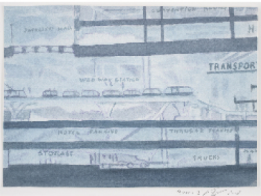
Oil on canvas

48 1/4 x 65 1/4 inches

122.6 x 165.7 cm

TUYLU0298

533 Hallway



Luc Tuymans

Inserts #1, 2008

Gouache on paper

Framed: 20 x 23 5/8 x 1 1/4 inches

50.8 x 60 x 3.2 cm

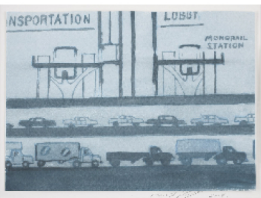
Matted: 19.49 x 23.23 inches

49.5 x 59 cm

Drawing: 9.72 x 13.19 inches

24.7 x 33.5 cm

TUYLU0303



Luc Tuymans

Inserts #2, 2008

Gouache on paper

Framed: 20 x 23 5/8 x 1 1/4 inches

50.8 x 60 x 3.2 cm

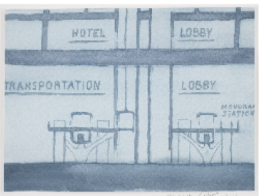
Matted: 19.49 x 23.23 inches

49.5 x 59 cm

Drawing: 9.72 x 13.19 inches

24.7 x 33.5 cm

TUYLU0304



Luc Tuymans

Inserts #3, 2008

Gouache on paper

Framed: 20 x 23 5/8 x 1 1/4 inches

50.8 x 60 x 3.2 cm

Matted: 19.49 x 23.23 inches

49.5 x 59 cm

Drawing: 9.72 x 13.19 inches

24.7 x 33.5 cm

TUYLU0305

533 Gallery III



Luc Tuymans

Transitions C, 2008

Gouache on paper

Framed: 30 x 35 1/2 x 1 1/4 inches

76.2 x 90.2 x 3.2 cm

Matted: 29.45 x 34.84 inches

74.8 x 88.5 cm

Drawing: 15.63 x 21.3 inches

39.7 x 54.1 cm

TUYLU0308



Luc Tuymans

Transitions B, 2008

Gouache on paper

Framed: 30 x 35 1/2 x 1 1/4 inches

76.2 x 90.2 x 3.2 cm

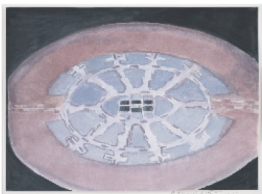
Matted: 29.45 x 34.84 inches

74.8 x 88.5 cm

Drawing: 15.63 x 21.3 inches

39.7 x 54.1 cm

TUYLU0307



Luc Tuymans

Transitions A, 2008

Gouache on paper

Framed: 30 x 35 1/2 x 1 1/4 inches

76.2 x 90.2 x 3.2 cm

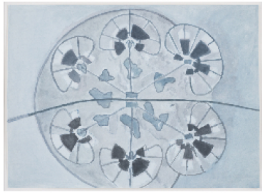
Matted: 29.45 x 34.84 inches

74.8 x 88.5 cm

Drawing: 15.63 x 21.3 inches

39.7 x 54.1 cm

TUYLU0306



Luc Tuymans

Transitions E, 2008

Gouache on paper

Framed: 33 1/4 x 40 1/2 x 1 1/4 inches

84.5 x 102.9 x 3.2 cm

Matted: 39.84 x 32.6 inches

101.2 x 82.8 cm

Drawing: 26.38 x 19.21 inches

67 x 48.8 cm

TUYLU0310



Luc Tuymans

Transitions D, 2008

Gouache on paper

Framed: 30 x 35 1/2 x 1 1/4 inches

76.2 x 90.2 x 3.2 cm

Matted: 29.45 x 34.84 inches

74.8 x 88.5 cm

Drawing: 15.63 x 21.3 inches

39.7 x 54.1 cm

TUYLU0309



Wonderland, 2007, Oil on canvas, 138.98 x 215.35 inches, 353 x 547 cm

Turtle depicts a mechanical float in Disneyland's famous, now-defunct attraction, the Main Street Electrical Parade. The turtle was a beloved character in the nighttime parade for decades.



Turtle, 2007, Oil on canvas, 144.88 x 200.39 inches, 368 x 509 cm

Epcot is based on a still from a 1960s promotional film for Project X, which would later be called EPCOT (Experimental Prototype Community of Tomorrow). The painting depicts a three-dimensional model for the carefully planned, utopian community. The original project was never realized.



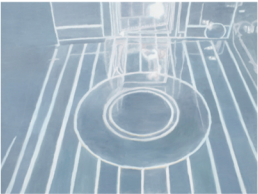
Epcot, 2008, Oil on canvas, 60.75 x 87.75 inches, 154.3 x 222.9 cm

Closely and uncomfortably cropped, *Magic* presents a view from the Epcot Center in Florida. Devoted to international culture and technological innovations, the theme park, which opened in 1982, represents the vestiges of a failed, comprehensive community project envisioned by Walt Disney in the 1960s.



Magic, 2007, Oil on canvas, 48.25 x 65.25 inches, 122.6 x 265.7 cm

Simulation is based on an early cgi (computer generated imaging) test submitted to Disney in 1983 for a proposed adaptation of Maurice Sendak's classic children's book *Where the Wild Things Are*. The Disney Studio dedicated a small group to this project for several years before abandoning it.



Simulation, 2007, Oil on canvas, 87 x 116 inches, 221 x 294.6 cm

In *Singing Flowers*, Tuymans presents a view of Disneyland's musical attraction *It's a Small World*. Part of the California theme park's famous Fantasyland, the attraction promotes Disney's utopian ideal of global unity and has been termed an "ode to peace and harmony" by its makers.



Singing flowers, 2008, Oil on canvas, 41.5 x 57.75 inches, 105.4 x 146.7 cm

Forever, depicts a set from The Carousel of Progress, an attraction that Disney developed for the 1964-1965 New York World's Fair, which celebrated the history of electricity and American domestic improvements. The attraction notably depended on theatrical scrim to hide multiple rotating stages with audio-animatronic robots as actors.



Forever, 2008, Oil on canvas, 68.75 x 70 inches, 174.6 x 177.8 cm

Referencing a 1960s promotional film, the work *W* presents a shadowy vision of Walt Disney before his original, unrealized plans for an expansive residential project known as EPCOT (Experimental Prototype Community of Tomorrow). Tuymans crops the corporate leader's actual body from view.



W, 2008, Oil on canvas, 74 x 47 inches, 188 x 119.4 cm