

Unrepeated: Unique Prints from Two Palms
January 13 - February 12, 2022**Terry Winters***Portrait II/8, 2021*

Monoprint with additions in pencil, crayon, and oil

43 x 35 inches

109.2 x 88.9 cm

Framed: 46 7/8 x 38 3/4 x 2 1/4 inches

119.1 x 98.4 x 5.7 cm

Initialed and dated verso

WINTE0006

**Terry Winters***Portrait I/5, 2021*

Monoprint with additions in pencil, crayon, and oil

43 x 35 inches

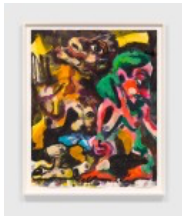
109.2 x 88.9 cm

Framed: 46 7/8 x 38 3/4 x 2 1/4 inches

119.1 x 98.4 x 5.7 cm

Initialed and dated verso

WINTE0005

**Dana Schutz***Night Couple, 2021*

Watercolor monotype with hand-painting in gouache

49 1/4 x 39 1/2 inches

125.1 x 100.3 cm

Framed: 54 1/2 x 44 5/8 x 2 1/4 inches

138.4 x 113.3 x 5.7 cm

Signed and dated lower right recto

SCHDA0194

**Dana Schutz***Red Painter, 2021*

Watercolor monotype with hand-painting in gouache

49 1/4 x 39 1/2 inches

125.1 x 100.3 cm

Framed: 54 1/2 x 44 5/8 x 2 1/4 inches

138.4 x 113.3 x 5.7 cm

Signed and dated lower right recto

SCHDA0150



Dana Schutz

The Love, 2021

Watercolor monotype with hand-painting in gouache

49 $\frac{3}{4}$ x 39 $\frac{1}{2}$ inches

126.4 x 100.3 cm

Framed: 54 $\frac{1}{2}$ x 44 $\frac{5}{8}$ x 2 $\frac{1}{4}$ inches

138.4 x 113.3 x 5.7 cm

Signed and dated lower right recto

SCHDA0192



Dana Schutz

Baggage, 2021

Watercolor monotype with hand-painting in gouache

49 $\frac{1}{4}$ x 39 $\frac{1}{2}$ inches

125.1 x 100.3 cm

Framed: 54 $\frac{1}{2}$ x 44 $\frac{5}{8}$ x 2 $\frac{1}{4}$ inches

138.4 x 113.3 x 5.7 cm

Signed and dated lower right recto

SCHDA0148



Dana Schutz

Blind Search Party, 2021

Watercolor monotype with hand-painting in gouache

49 $\frac{1}{2}$ x 39 $\frac{1}{2}$ inches

125.7 x 100.3 cm

Framed: 54 $\frac{1}{2}$ x 44 $\frac{5}{8}$ x 2 $\frac{1}{4}$ inches

138.4 x 113.3 x 5.7 cm

Signed and dated lower right recto

SCHDA0193



Elizabeth Peyton

Elias I, 2021

Monotype in oil on handmade paper

31 x 23 inches

78.7 x 58.4 cm

Framed: 34 $\frac{3}{4}$ x 26 $\frac{3}{4}$ x 2 inches

88.3 x 67.9 x 5.1 cm

Signed verso

PEYEL0062



Elizabeth Peyton

Titian After Titian 1, 2021

Monotype in oil on handmade paper

43 ½ x 31 ½ inches

110.5 x 80 cm

Framed: 47 7/8 x 35 ¾ x 2 ½ inches

121.6 x 90.8 x 6.4 cm

Signed verso

PEYEL0060



Elizabeth Peyton

Titian After Titian 2, 2021

Monotype in oil on handmade paper

43 ½ x 31 ½ inches

110.5 x 80 cm

Framed: 48 x 35 7/8 x 2 ½ inches

121.9 x 91.1 x 6.4 cm

Signed verso

PEYEL0061



Elizabeth Peyton

Elias 2, 2021

Monotype in oil on handmade paper

31 x 23 inches

78.7 x 58.4 cm

Framed: 34 ¾ x 26 ¾ x 2 inches

88.3 x 67.9 x 5.1 cm

Signed verso

PEYEL0063



Mel Bochner

Money, 2021

Monoprint in oil with collage, engraving, and embossment on handmade paper

91 x 47 inches

231.1 x 119.4 cm

Framed: 95 ½ x 51 ¾ x 2 7/8 inches

242.6 x 131.4 x 7.3 cm

Signed and dated recto

BOCME0017



Stanley Whitney

Untitled, 2021

Monotype in watercolor and crayon on Lanaquarelle paper

47 ¾ x 67 ¾ inches

121.3 x 172.1 cm

Framed: 51 x 71 1/8 inches

129.5 x 180.7 cm

Signed and dated lower right recto

WHIST0017



Stanley Whitney

Untitled, 2021

Monotype in watercolor and crayon on Lanaquarelle paper

47 ¾ x 67 ¾ inches

121.3 x 172.1 cm

Framed: 51 x 71 1/8 inches

129.5 x 180.7 cm

Signed and dated lower right recto

WHIST0018



Mel Bochner

What Were You Thinking? / Are You Out Of Your Fucking Mind? / Do I Have To Draw You A Picture?, 2021

Monoprint in oil with collage, engraving, and embossment on handmade paper

90 x 90 inches

228.6 x 228.6 cm

Framed: 95 x 98 ½ x 2 ¾ inches

241.3 x 250.2 x 7 cm

Signed and dated recto

BOCME0016



Mel Bochner

Blah, Blah, Blah, 2021

Monoprint in three (3) parts in oil with collage, engraving, and embossment on handmade paper

85 x 93 inches

215.9 x 236.2 cm

Framed: 90 ¼ x 97 5/8 x 2 7/8 inches

229.2 x 248 x 7.3 cm

Signed and dated recto

BOCME0015



Marina Adams

Untitled, 2021

Monotype in watercolor on Lanaquarelle paper

49 5/8 x 39 3/4 inches

126 x 101 cm

Framed: 53 x 43 inches

134.6 x 109.2 cm

Initialed and dated lower right recto; signed and dated verso

ADAMA0003



Marina Adams

Untitled, 2021

Monotype in watercolor on Lanaquarelle paper

49 3/4 x 39 3/4 inches

126.4 x 101 cm

Framed: 53 x 43 inches

134.6 x 109.2 cm

Initialed and dated lower right recto; signed and dated verso

ADAMA0002



Carroll Dunham

Untitled (February 7, 2007), 2007

Monotype in watercolor and pencil on Lanaquarelle paper

63 3/4 x 49 1/2 inches

161.9 x 125.7 cm

Framed: 68 7/8 x 54 1/2 x 2 1/2 inches

174.9 x 138.4 x 6.4 cm

Signed and dated recto

DUNCA0005



Carroll Dunham

Untitled, Dec. 11, 2019, 2019

Monotype in watercolor and pencil on Lanaquarelle paper

39 5/8 x 32 inches

100.6 x 81.3 cm

Framed: 43 7/8 x 36 x 2 inches

111.4 x 91.4 x 5.1 cm

Initialed and dated recto

DUNCA0004



Carroll Dunham

Untitled (2B), 2009

Monotype in watercolor and pencil on Lanaquarelle paper

35 x 43 inches

88.9 x 109.2 cm

Framed: 39 ½ x 47 x 2 ¼ inches

100.3 x 119.4 x 5.7 cm

Signed, dated, and inscribed recto

DUNCA0007



Carroll Dunham

Untitled, Feb. 4, 2016 #1, 2016

Monotype in watercolor and pencil on Lanaquarelle paper

43 ¾ x 34 inches

111.1 x 86.4 cm

Framed: 48 1/8 x 38 x 2 inches

122.2 x 96.5 x 5.1 cm

Signed and dated upper right recto

DUNCA0008



Cecily Brown

Picture This 1, 2020

Pastel monotype with hand-drawing in pastel

52 ½ x 71 ½ inches

133.3 x 181.6 cm

Framed: 56 ½ x 75 7/8 inches

143.5 x 192.7 cm

Signed, dated, and inscribed recto; signed verso

BROCE0013



Cecily Brown

Picture This 3, 2020

Pastel monotype with hand-drawing in pastel

52 ¼ x 71 ½ inches

132.7 x 181.6 cm

Framed: 56 ½ x 75 7/8 inches

143.5 x 192.7 cm

Signed, dated, and inscribed recto; signed verso

BROCE0015



Cecily Brown

Picture This 2, 2020

Pastel monotype with hand-drawing in pastel

52 ½ x 71 ½ inches

133.3 x 181.6 cm

Framed: 56 ½ x 75 7/8 inches

143.5 x 192.7 cm

Signed, dated, and inscribed recto; signed verso

BROCE0014



Cecily Brown

Untitled, 2012

Monotype in oil on Lanaquarelle paper

47 ¾ x 71 ¾ inches

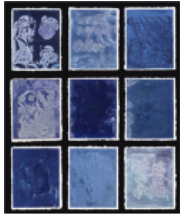
121.3 x 182.2 cm

Framed: 51 ¼ x 75 ¼ x 2 1/8 inches

130.2 x 191.1 x 5.4 cm

Signed and dated verso

BROCE0016



Terry Winters

Notes For Color Coding, Set 14, 2005

Monoprint with embossment in nine (9) parts

Panel, each: 22 x 17 inches

55.9 x 43.2 cm

Framed, each: 24 ¼ x 20 ¼ x 1 ¾ inches

61.6 x 51.4 x 4.4 cm

WINTE0007



Dana Schutz

Sea Group, 2021

Watercolor monotype with hand-painting in gouache

49 ¾ x 39 ½ inches

126.4 x 100.3 cm

Framed: 54 ½ x 44 5/8 x 2 ¼ inches

138.4 x 113.3 x 5.7 cm

Signed and dated lower right recto

SCHDA0149



Chris Ofili

Elixir in the shade, 2021

Woodcut monprint with raw pigments and gold leaf

22 $\frac{3}{4}$ x 32 $\frac{3}{4}$ inches

57.8 x 83.2 cm

Framed: 24 $\frac{1}{4}$ x 34 $\frac{1}{2}$ x 1 $\frac{3}{4}$ inches

61.6 x 87.6 x 4.4 cm

Signed and dated lower right recto

OFICH0896



Chris Ofili

Young Satyr, 2021

Woodcut monprint with raw pigments and gold leaf

22 $\frac{3}{4}$ x 32 $\frac{3}{4}$ inches

57.8 x 83.2 cm

Framed: 24 $\frac{1}{4}$ x 34 $\frac{1}{2}$ x 1 $\frac{3}{4}$ inches

61.6 x 87.6 x 4.4 cm

Signed and dated lower right recto

OFICH0900



Chris Ofili

Archer's sunset, 2021

Woodcut monprint with raw pigments and gold leaf

22 $\frac{3}{4}$ x 32 $\frac{3}{4}$ inches

57.8 x 83.2 cm

Framed: 24 $\frac{1}{4}$ x 34 $\frac{1}{2}$ x 1 $\frac{3}{4}$ inches

61.6 x 87.6 x 4.4 cm

Signed and dated lower right recto

OFICH0899



Chris Ofili

All-seeing eye, 2021

Woodcut monprint with raw pigments and gold leaf

22 $\frac{3}{4}$ x 32 $\frac{3}{4}$ inches

57.8 x 83.2 cm

Framed: 24 $\frac{1}{4}$ x 34 $\frac{1}{2}$ x 1 $\frac{3}{4}$ inches

61.6 x 87.6 x 4.4 cm

Signed and dated lower right recto

OFICH0895



Chris Ofili

Merging of spirits, 2021

Woodcut monograph with raw pigments and gold leaf

22 $\frac{3}{4}$ x 32 $\frac{3}{4}$ inches

57.8 x 83.2 cm

Framed: 24 $\frac{1}{4}$ x 34 $\frac{1}{2}$ x 1 $\frac{3}{4}$ inches

61.6 x 87.6 x 4.4 cm

Signed and dated lower right recto

OFICH0897



Chris Ofili

Birth of a Satyr, 2021

Woodcut monograph with raw pigments and gold leaf

22 $\frac{3}{4}$ x 32 $\frac{3}{4}$ inches

57.8 x 83.2 cm

Framed: 24 $\frac{1}{4}$ x 34 $\frac{1}{2}$ x 1 $\frac{3}{4}$ inches

61.6 x 87.6 x 4.4 cm

Signed and dated lower right recto

OFICH0901



Peter Doig

Untitled, 2011

Monotype in watercolor, pure pigment, and colored pencil on Lanaquarelle paper

42 $\frac{1}{4}$ x 55 inches

107.3 x 139.7 cm

Framed: 56 $\frac{1}{2}$ x 69 $\frac{1}{4}$ x 1 $\frac{1}{4}$ inches

143.5 x 175.9 x 3.2 cm

DOIPE0064



Elizabeth Peyton

Chloe in W (three), 2002

Monotype with handpainting on Twinrocker handmade paper

30 x 22 inches

76.2 x 55.9 cm

Framed: 35 x 27 x 1 $\frac{1}{2}$ inches

88.9 x 68.6 x 3.8 cm

Signed and dated verso

PEYEL0059



Chris Ofili

Pink Afternoon, 2021

Etching on Suminagashi painting

40 x 28 inches

101.6 x 71.1 cm

Framed: 43 ¼ x 31 ¼ x 1 ½ inches

109.9 x 79.4 x 3.8 cm

Signed and dated lower right recto

OFICH0909



Chris Ofili

Pink Afternoon, 2021

Etching on Suminagashi painting

40 x 28 inches

101.6 x 71.1 cm

Framed: 43 ¼ x 31 ¼ x 1 ½ inches

109.9 x 79.4 x 3.8 cm

Signed and dated lower right recto

OFICH0915



Chris Ofili

Pink Afternoon, 2021

Etching on Suminagashi painting

40 x 28 inches

101.6 x 71.1 cm

Framed: 43 ¼ x 31 ¼ x 1 ½ inches

109.9 x 79.4 x 3.8 cm

Signed and dated lower right recto

OFICH0902



Chris Ofili

Pink Afternoon, 2021

Etching on Suminagashi painting

40 x 28 inches

101.6 x 71.1 cm

Framed: 43 ¼ x 31 ¼ x 1 ½ inches

109.9 x 79.4 x 3.8 cm

Signed and dated lower right recto

OFICH0911



Chris Ofili

Pink Afternoon, 2021

Etching on Suminagashi painting

40 x 28 inches

101.6 x 71.1 cm

Framed: 43 ¼ x 31 ¼ x 1 ½ inches

109.9 x 79.4 x 3.8 cm

Signed and dated lower right recto

OFICH0910



Chris Ofili

Pink Afternoon, 2021

Etching on Suminagashi painting

40 x 28 inches

101.6 x 71.1 cm

Framed: 43 ¼ x 31 ¼ x 1 ½ inches

109.9 x 79.4 x 3.8 cm

Signed and dated lower right recto

OFICH0905



Chris Ofili

Pink Afternoon, 2021

Etching on Suminagashi painting

40 x 28 inches

101.6 x 71.1 cm

Framed: 43 ¼ x 31 ¼ x 1 ½ inches

109.9 x 79.4 x 3.8 cm

Signed and dated lower right recto

OFICH0907



Chris Ofili

Pink Afternoon, 2021

Etching on Suminagashi painting

40 x 28 inches

101.6 x 71.1 cm

Framed: 43 1/4 x 31 1/4 x 1 1/2 inches

109.9 x 79.4 x 3.8 cm

Signed and dated lower right recto

OFICH0908